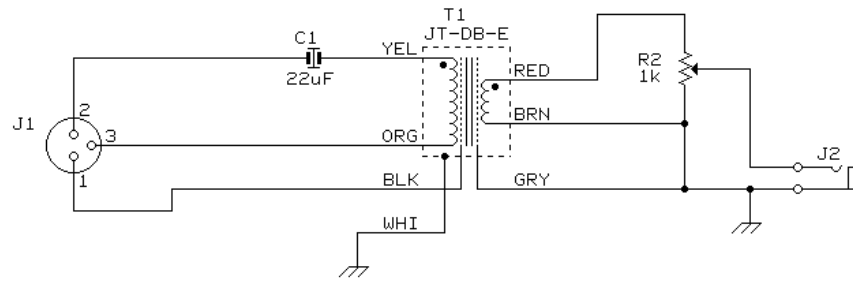
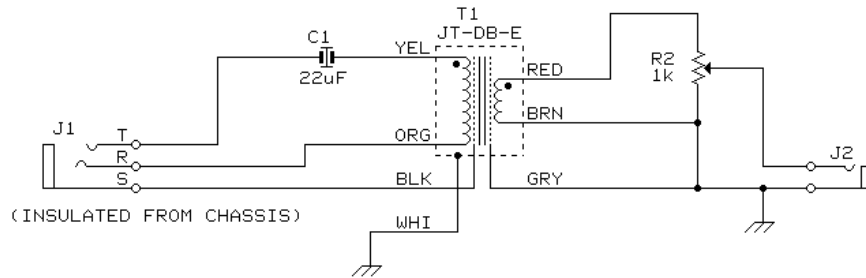


# JT-DB-E IN HAM RADIO LINE LEVEL TO MIC LEVEL CIRCUIT

**XLR  
INPUT  
WIRING**



**1/4" PHONE  
INPUT  
WIRING**



**NOTES:**

- 1) R2 IS AUDIO TAPER POTENTIOMETER.
- 2) C1 IS 16 VOLT NON-POLARIZED CAPACITOR.
- 3) BUILD IN SMALL ALUMINUM BOX FOR R.F. SHIELDING.
- 4) 1/4" INPUT JACK SHOULD BE ISOLATED FROM CHASSIS USING SHOULDER WASHERS, IF THAT STYLE INPUT IS USED.

© COPYRIGHT 2002, JENSEN TRANSFORMERS, INC.

<b>jensen</b>	AS096
	11/20/02
7135 HAYVENHURST AVE. VAN NUYS, CALIFORNIA 91406 (818) 374-5857	